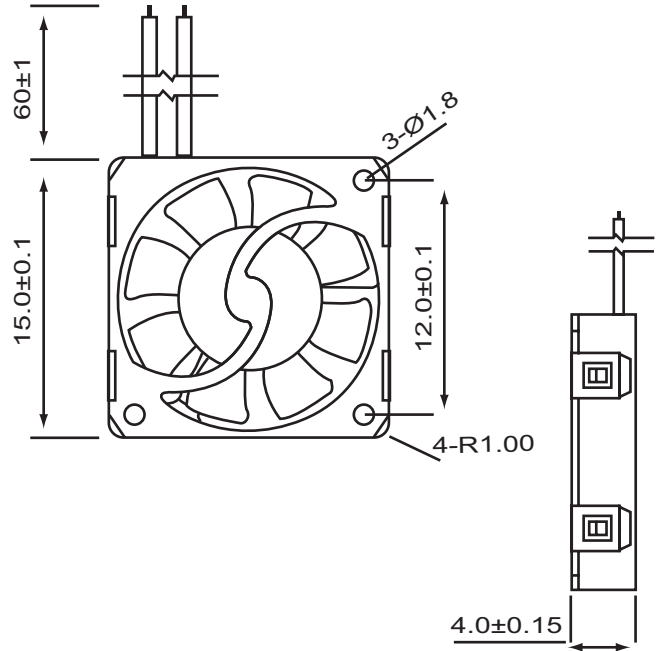
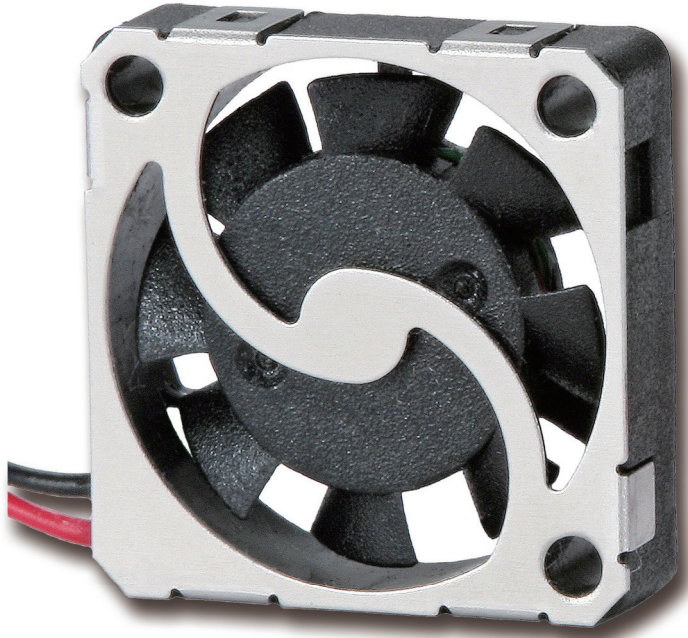




External Dimensions



Weight(g):1.5

Frame: Plastic (UL:94V-0)

Impeller: Plastic (UL:94V-0)

Lead Wire: UL 1571 AWG32 or 30

Operating Temperature: -10~ +60°C

Specifications(Nominal)

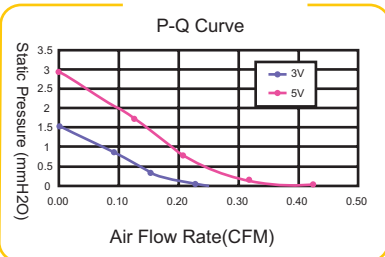
*Noise is measured at the distance of one (1) meter from the axis of intake.

Bearing type: ⊙=Ball ※=Sleeve ○=1B1S ●=Hypro bearing

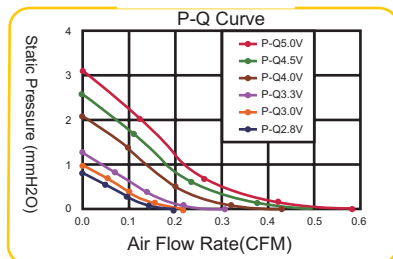
Frame size (mm)	Model No.	Rated (V)	Bearing System Type	Current (A)	Operating Voltage(V)	Rated Speed (rpm)	Maximum Air Flow		Maximum Pressure		Noise Level (dB/A)
							(CMM)	(CFM)	(InAq)	(mmAq)	
15x15x4	JR1504E-5	5	※	0.035	4.5~5.5	19000	0.0161	0.57	0.12	3.05	<35
15x15x4	JR1504D-5	5	※	0.042	4.5~5.5	16000	0.0113	0.4	0.11	2.8	<35
		3.3		0.030	2.8~3.6	10000	0.008	0.3	0.059	1.5	25
15x15x4	JR1504U-3	2.4	※	0.008	2.4~3.3	5000	0.0019	0.07	0.0083	0.21	20

Specifications subject to change without notice.

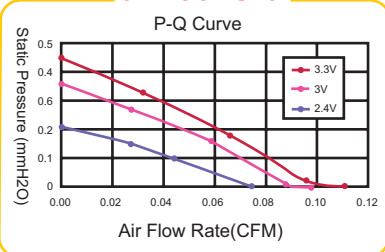
JR1504D-5



JR1504E-5



JR1504U-3



*Motor protective circuit and third lead wire functions

0	1	2	3	4	6	7	8	9	A	B
✓										

*Safety approvals

✓	✓			✓